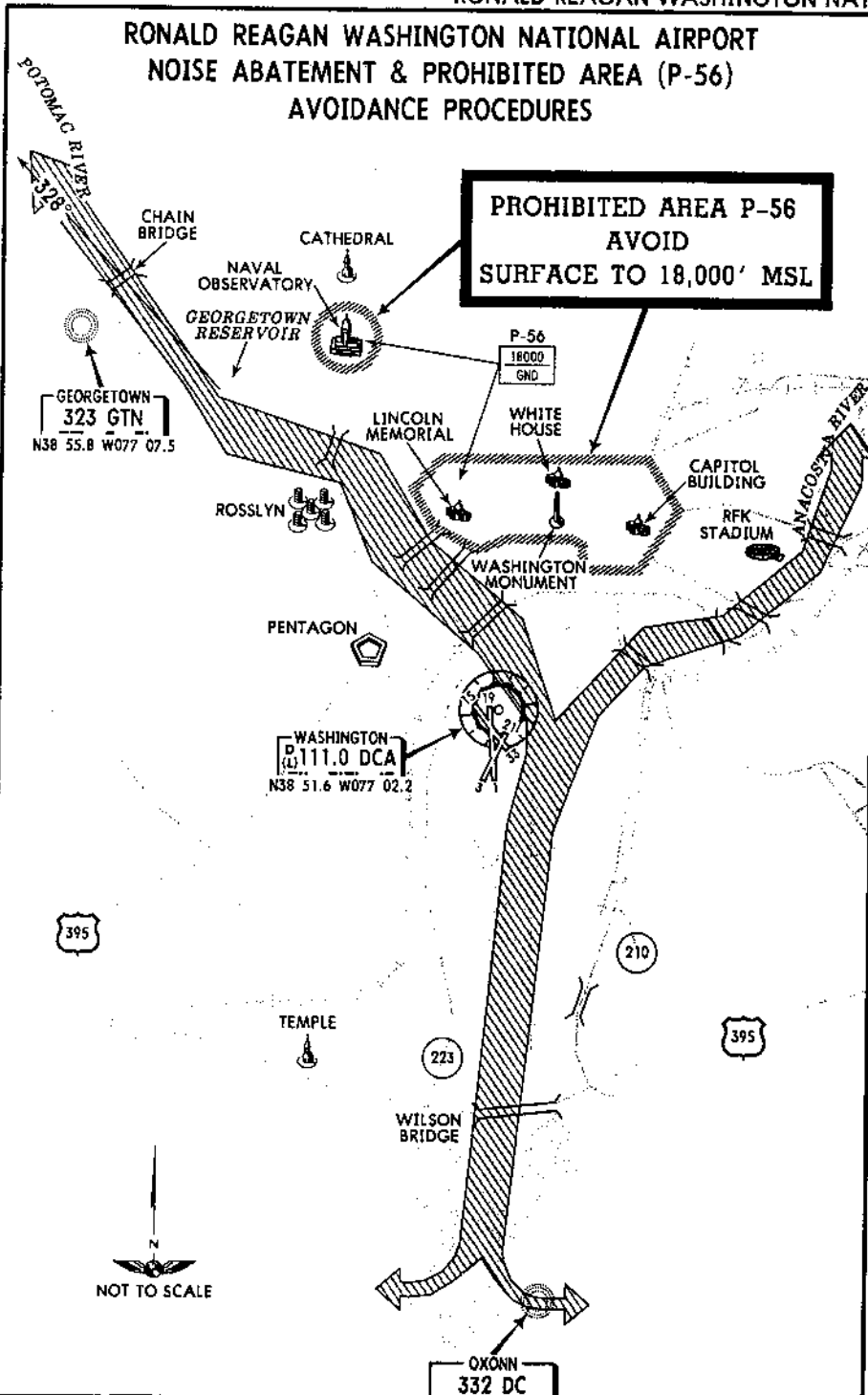
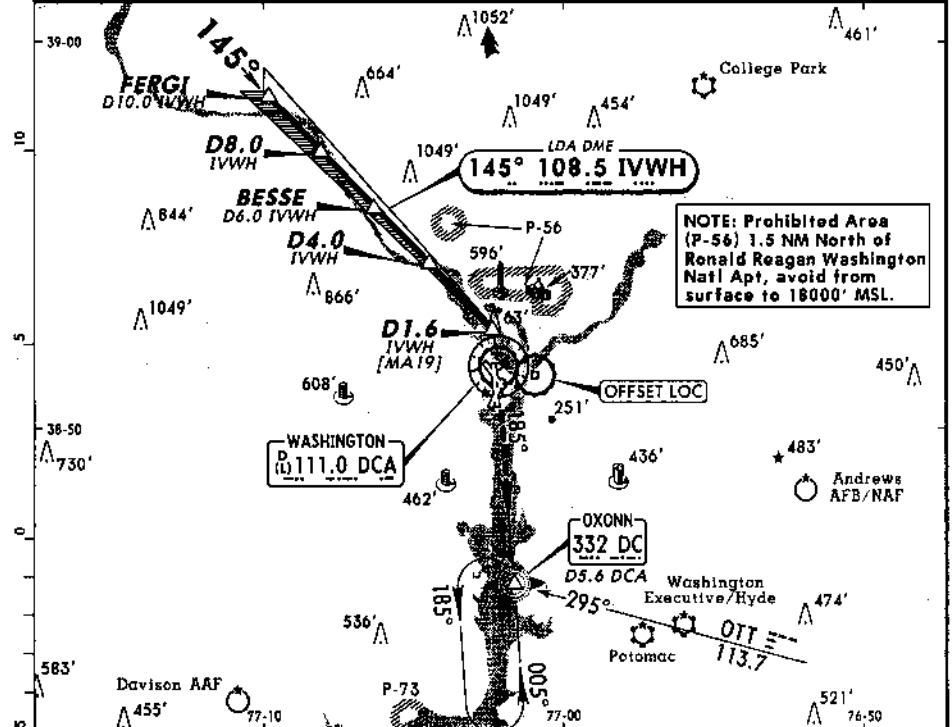


RONALD REAGAN WASHINGTON NATIONAL AIRPORT
NOISE ABATEMENT & PROHIBITED AREA (P-56)
AVOIDANCE PROCEDURES



D-ATIS 132.65	AWOS-3 128.8	POTOMAC Approach (R) 124.7	WASHINGTON Tower 119.1	Ground 121.7	Helicopter 120.75
LDA 108.5	Final 145°	Minimum Alt 1600' (1587')	MDA(H) 720' (707')	Apt Elev 15' TDZE 13'	2600'
MISSED APCH: Climbing RIGHT turn to 1800' outbound via DCA VOR R-185 to OXONN LOM/INT/D5.6 DCA and hold.					
Alt Set: INCHES		Trans level: FL 180		Trans alt: 18000'	
1. RADAR required.			MSA DCA VOR		



FERGI D10.0 IVVWH 3000'	D8.0 IVVWH 2300'	BESSE D6.0 IVVWH 1600'	D4.0 IVVWH 1000'	D1.6 IVVWH [MA19]	OXONN 332 DC D5.6 DCA
1 in = 5 NM					Washington Executive/Hyde
Only authorized operators may use VNAV DA(H) in lieu of MDA(H).					OTT 113.7
[TCH 50']					TDZE 13'

Gnd speed-Kts	70	90	100	120	140	160	MALSF	1800'	DCA	DC	
Descent angle [3.00°]	372	478	531	637	743	849	VASI	via 111.0	R-185	332	
MAP at D1.6 IVVWH							STRAIGHT-IN LANDING RWY 19				
							CIRCLE-TO-LAND				
							MDA(H) 720' (707')				
							ALS out				
A	RVR 60 or 1/4						Max Kts	MDA(H)			
B							90	720' (705') - 1/4			
C	2						120	720' (705') - 2			
D	2 1/4						140	720' (705') - 2 1/4			
							165	720' (705') - 2 1/4			